

**DAILY MAGAZINE
BLOG ON WITH NEWS, VIEWS, REVIEWS, DIARIES,
EVENTS & PHOTO-JOURNALS**

[back to Saatchi Online blog home](#)

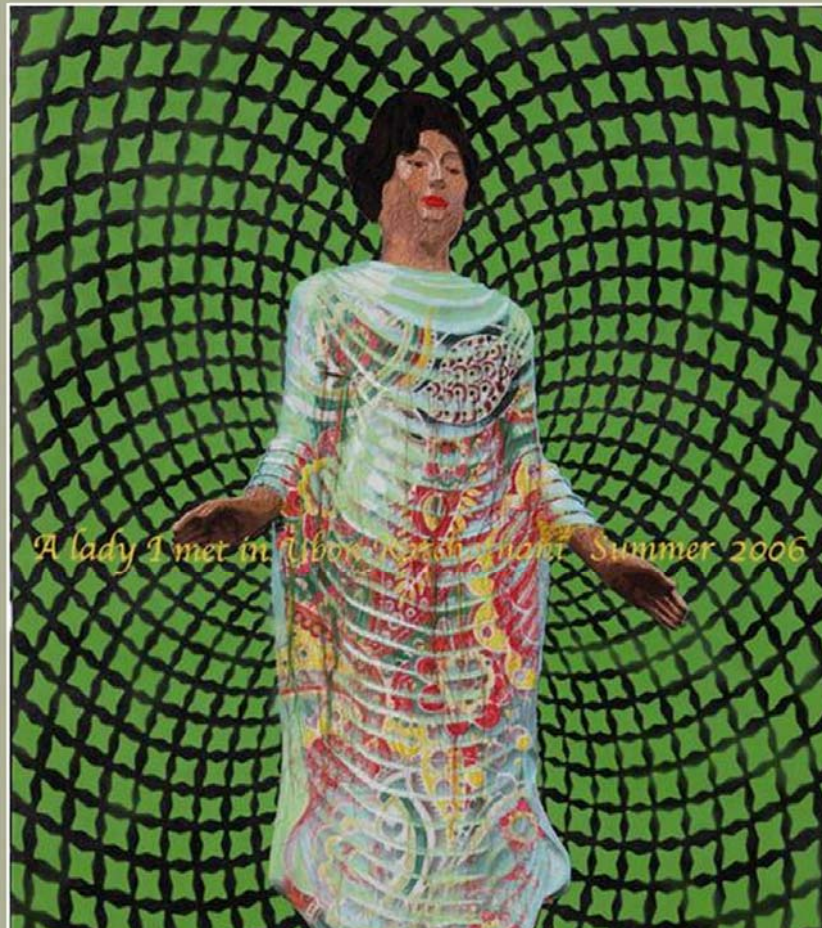
THE SAATCHI GALLERY

**KOREAN EYE: FANTASTIC ORDINARY, PRESENTS NEW WORK FROM
KOREA'S LEADING CONTEMPORARY ARTISTS AT THE SAATCHI
GALLERY**

Building on the popular success of last year's Korean Eye: Moon Generation, which attracted over 250,000 visitors to the Saatchi Gallery, 'Fantastic Ordinary' presents a selection of over 30 works by a select group of 12 Korean artists. The exhibition is at the Saatchi Gallery until 18 July; it will then travel to Singapore in September and Seoul in November.

The artists presenting works in 'Fantastic Ordinary' are Bae Chan Hyo; Bae Joon Sung; Gwon Osang; Hong Young In; Jeon Chae-gang, Jeon Joon Ho; Ji Yong Ho; Kim Dong Yoo; Kim Hyunsoo; Lee Rim; Park Eun Young; and Shin Meekyoung. Jeon Chae-gang was the 2009 JoongAng Fine Art Prize Winner and Lee Rim who exhibited in Moon Generation has been subsequently commissioned to create new work for Perrier Jouet, a sponsor of Korean Eye.

Hong Young In



Bae
Joon
Sung



Kim



Hyunsoo

The selection of work has been made by an international curatorial board, including Director of Hanart TZ Gallery and Chinese Curator Tsong-zung Chang; Co-Founder of Korean Eye and a Royal College of Art Honorary Fellow Serenella Ciclitira; Curator and Art Historian Jiyoung Lee; Curator Daehyung Lee; Art Consultant and Curator Amelie von Wedel and contemporary art specialist Rodman Primack.

The exhibition is organised by Korean Eye, founded in 2009 by David Ciclitira to support emerging and more established Korean artists by exhibiting their work internationally. David and his wife Serenella have been avid collectors for over 20 years, and are working to increase international awareness for Korean contemporary artists. The launch of this new exhibition in London provides an opportunity for cultural exchange, and the appreciation of Korea's rapidly developing art scene, which until recently had little exposure outside Korea.

Dr Tim Miller, Director of Standard Chartered and Chairman of Standard Chartered First Bank Korea, said: "We are delighted to be supporting Korean Eye once again. The diverse range of talent and expression on display as part of the exhibition this year is truly exceptional. Standard Chartered is committed to the long term development of the communities in which we operate, as a demonstration of our commitment to be Here for good. We are proud to be here for Korean contemporary artists and to use our global network to support them."

Nigel Hurst, CEO of the Saatchi Gallery, said: "After the success of Korean Eye in 2009, the Saatchi Gallery is delighted to support this year's exhibition and have greater involvement in Korean Eye going forward. This year's exhibition offers another outstanding selection of fresh and arresting work".

Fantastic Ordinary is also the backdrop for the publication of the book Korean Eye: Contemporary Korean Art published by SKIRA and edited by Serenella Ciclitira. It is the first major book to promote Korean contemporary art in English and will be a definitive point of reference for the Korean contemporary art scene.

Korean Eye
5-18 July 2010
Saatchi Gallery
London SW3